

Using XLReporter with DeltaV Event Chronicle

Overview

XLReporter takes values directly from DeltaV Event Chronicle files to automatically populate workbooks, periodically, via VBA or on event, without needing Excel. The award winning history engine of **XLReporter** can return either raw or calculated Industrial metrics directly to the reports.

The Event Chronicle is a set of text based files with the extension .evt where each file contains all the events that occurred during a batch.

Distribute the reports by email, FTP, file server and printers. Enable **XLReporter's** Web Portal and access reports from any device supporting a web browser such as a smart phone or tablet.

Prerequisites

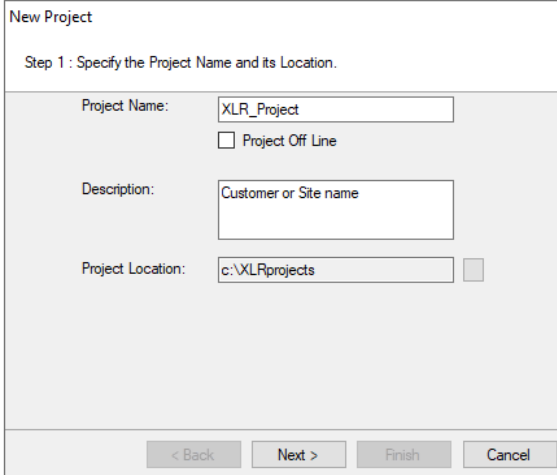
Verify that .evt files are being generated in the directory configured in DeltaV.

Create a Project

From the **XLReporter Project Explorer** select **File, New** to start the **Project Wizard**. This will give step-by-step instructions on creating a project

Step 1

- Enter a **Project Name** and **Description** (optional).



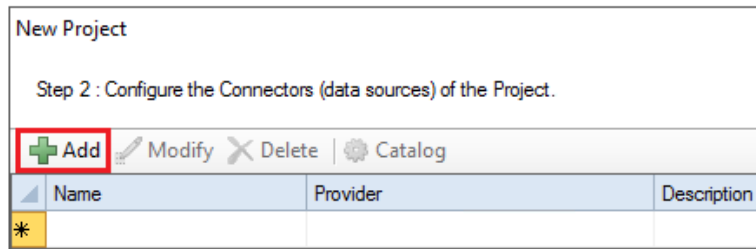
The screenshot shows a dialog box titled "New Project" with the following fields and options:

- Project Name:** XLR_Project
- Project Off Line
- Description:** Customer or Site name
- Project Location:** c:\XLRprojects

At the bottom, there are four buttons: "< Back", "Next >", "Finish", and "Cancel".

Step 2

- Configure the data connector, click **Add**



Select **Emerson Automation Solutions, DeltaV Event Chronicle**.

DeltaV Event Chronicle

Connector Name: DeltaV_EventChronicle

Description:

Source

Folder: C:\XLRprojects\XLR_Demo\Data_EventChronicles

Filter: *.evt

File

Fixed

@BS_20180725_040358671.evt

Variable

{File Name}

File Content

Encoding: ANSI

Separator

Comma Semicolon

Tab Other

Decimal Symbol: .

Consolidate to a Database

Server:

Database:

Settings

OK Cancel

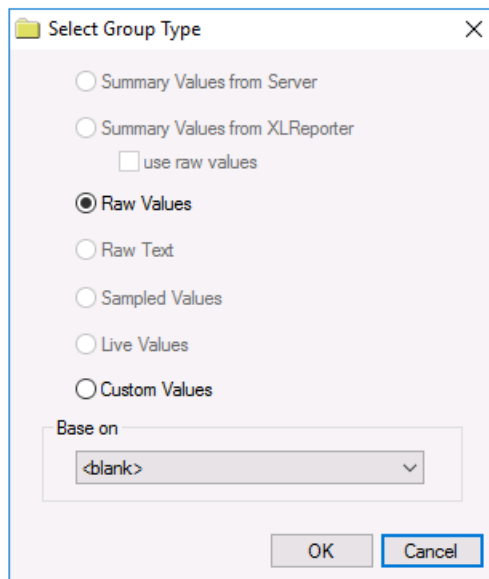
Under **Source**, for **Folder**, click the browse pushbutton (...) and select the folder where the Event Chronicle files are stored.

The **File** setting is used to determine which evt file to extract data from. Typically this should be set to **Variable** so the name of the file can be specified at runtime by setting the variable.

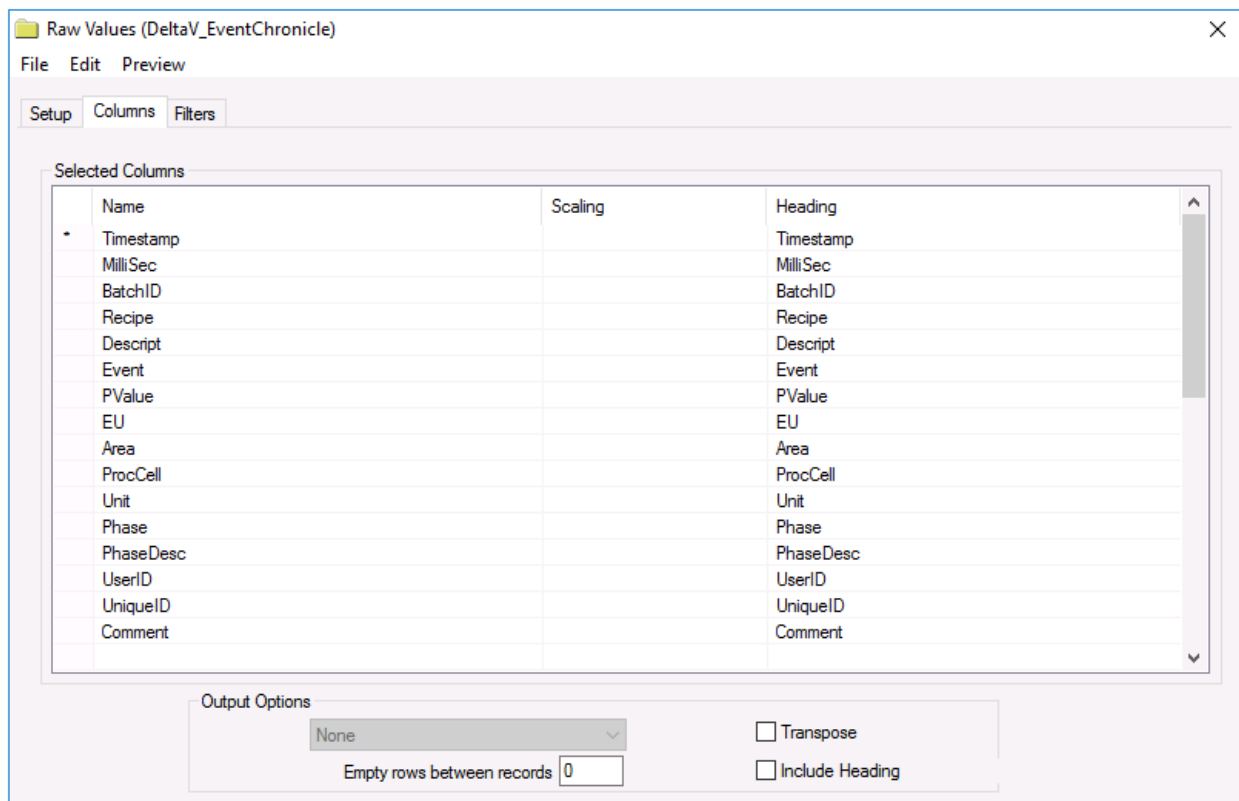
The **File Content** settings determine how the data in the file is interpreted when data is retrieved.

Verify Data Communication

To verify communication with files from the DeltaV Event Chronicle, open the **Project Explorer** and select the **Tools** tab. Open **Connector Groups**. Select the DeltaV Event Chronicle connector and then select **Add**.

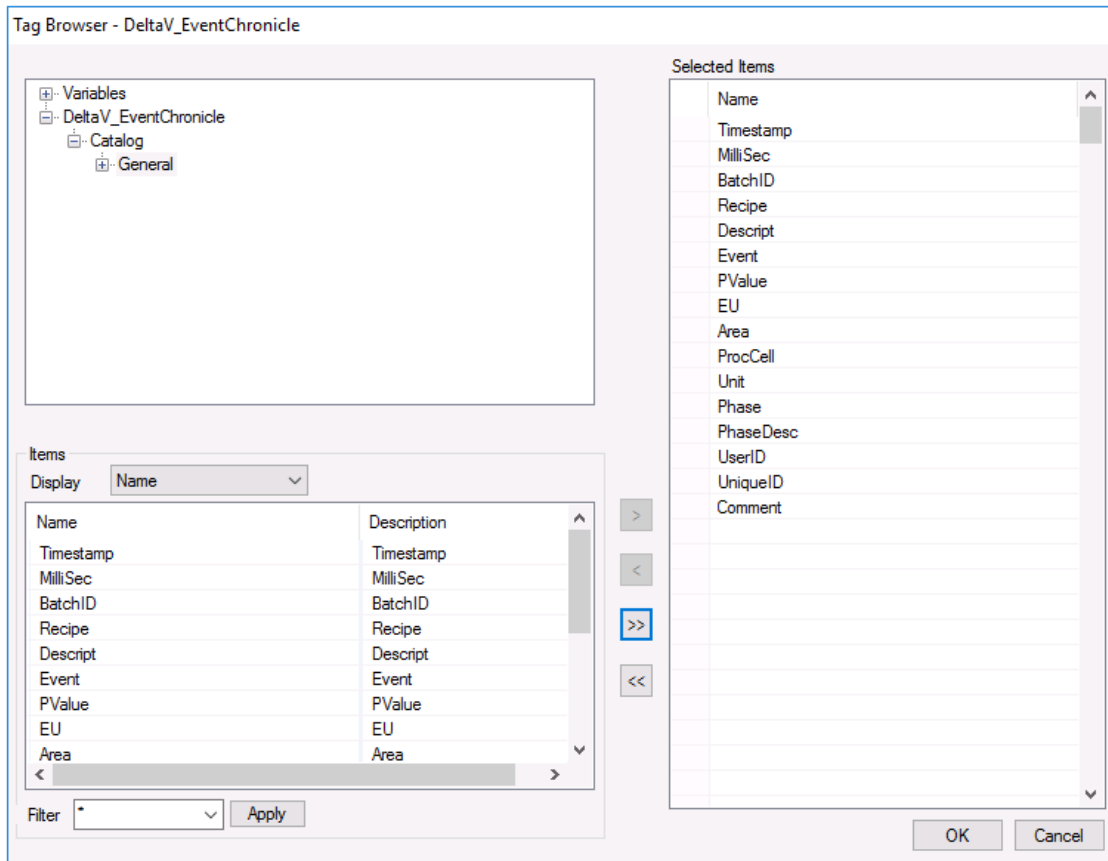


Set the **Group Type** to *Raw Values* and click **OK**.



On the **Columns** tab:

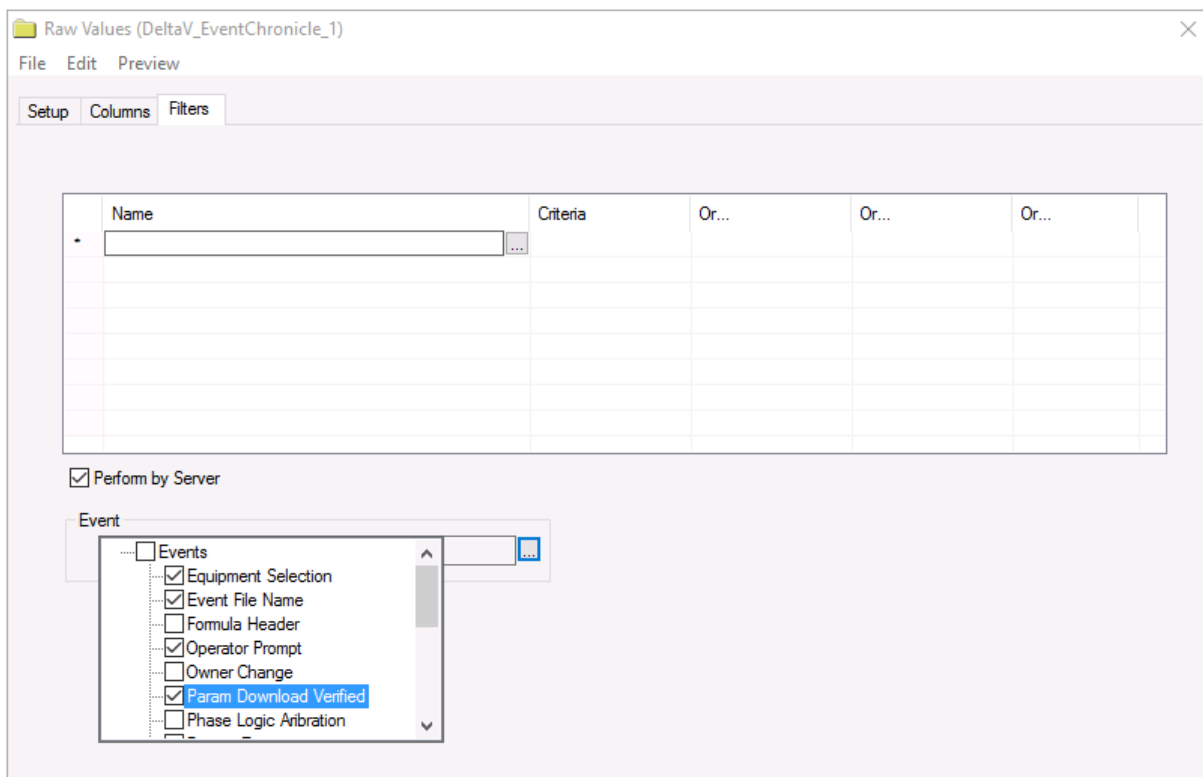
- Select the first row under the Name column
- Click the browse pushbutton (...)



- In the Tag Browser expand **Catalog, General** and add **Items** from the lower left.

Click **OK** to add these to the group.

On the **Filters** tab, the Event setting is used to filter for specific events in the file. If left blank, all events are returned, otherwise only records with the selected events are returned.



To retrieve data, select **Preview**.

Preview

Refresh Stop

Database

Filter None

File Name	BatchID	Recipe	Descript	Event	PValue	EU
<input type="checkbox"/> File Name	AB8Z25M357	XYTHANE_8000D		Event File Name	D:\Delta\DV...	
<input checked="" type="checkbox"/> @BS_20180725_040358671	AB8Z25M357	XYTHANE_8000D	Version	Recipe Header	1	
<input type="checkbox"/> @BS_20180725_021252018	AB8Z25M357	XYTHANE_8000D	Version Date	Recipe Header	09:56:28 October...	
<input type="checkbox"/> @BS_20180724_160003723	AB8Z25M357	XYTHANE_8000D	Author	Recipe Header	Mast	
<input type="checkbox"/> @BS_20180724_063245356	AB8Z25M357	XYTHANE_8000D	Product Code	Recipe Header	UNDEFINED	
<input type="checkbox"/> @BS_20180724_023744402	AB8Z25M357	XYTHANE_8000D	Description	Recipe Header	8000D	
<input type="checkbox"/> @BS_20180723_215648406	AB8Z25M357	XYTHANE_8000D	Class or Instance	Recipe Header	Class	
<input type="checkbox"/> @BS_20180723_153334223	AB8Z25M357	XYTHANE_8000D	Recipe Type	Recipe Header	BP	
<input type="checkbox"/> @BS_20180723_080926687	AB8Z25M357	XYTHANE_8000D	Area Model File ...	Recipe Header	D:\Delta\DV...	
<input type="checkbox"/> @BS_20180723_040328322	AB8Z25M357	XYTHANE_8000D	File Name	Recipe Header	D:\Delta\DV...	
<input type="checkbox"/> @BS_20180722_154241922	AB8Z25M357	XYTHANE_8000D	Scale	Recipe Header	100.0	%
<input type="checkbox"/> @BS_20180722_032947772	AB8Z25M357	XYTHANE_8000D	AGIT_SPEED_SP	Recipe Data	90.000000	%
<input type="checkbox"/> @BS_20180722_025822930	AB8Z25M357	XYTHANE_8000D	AGIT_SPEED_S...	Recipe Data	25.000000	%
<input type="checkbox"/> @BS_20180721_162821464	AB8Z25M357	XYTHANE_8000D	DRUM_TOTE_V...	Recipe Data	-0.900000	bar-g
<input type="checkbox"/> @BS_20180721_162505600	AB8Z25M357	XYTHANE_8000D	REWORK_DRU...	Recipe Data	0.000000	kg
<input type="checkbox"/> @BS_20180721_025030719	AB8Z25M357	XYTHANE_8000D	RXN_TEMP_SP2	Recipe Data	80.000000	\B0\C
<input type="checkbox"/> @BS_20180721_024927792	AB8Z25M357	XYTHANE_8000D	RXN_TIMR1_SP	Recipe Data	120.000000	min
<input type="checkbox"/> @BS_20180721_024803962	AB8Z25M357	XYTHANE_8000D	RXN_TIMR2_SP	Recipe Data	60.000000	min
	AB8Z25M357	XYTHANE_8000D	RX_FULL_VAC_...	Recipe Data	-0.900000	bar-g
	AB8Z25M357	XYTHANE_8000D	RX_PRESS_SP	Recipe Data	-0.900000	bar-g

Rows 525

In the **Preview** window, set Filter to None. A list of every .evt file in the folder is listed. Select one and click **Refresh** to view data.