

Using XLReporter with DeltaV OPC

Overview

XLReporter takes process values directly from the Emerson Automation Solutions DeltaV OPC DA server to a report without requiring a historian or database. This is accomplished by “report-as-you-run” technology that automatically populates a workbook, periodically or on event, without needing Excel. Completed reports are produced in workbook, PDF and web formats.

Setup DeltaV

In order to connect to the DeltaV OPC Server it must be available on the machine where **XLReporter** is installed. However, in some cases, **XLReporter** must be installed on a non-DeltaV node on the network where the OPC Server is not running.

To overcome this and gain access to the OPC Server, install the DeltaV OPC Remote application on the machine with **XLReporter**. This can be found on the DeltaV installation CD in the **DV_Extras** folder.

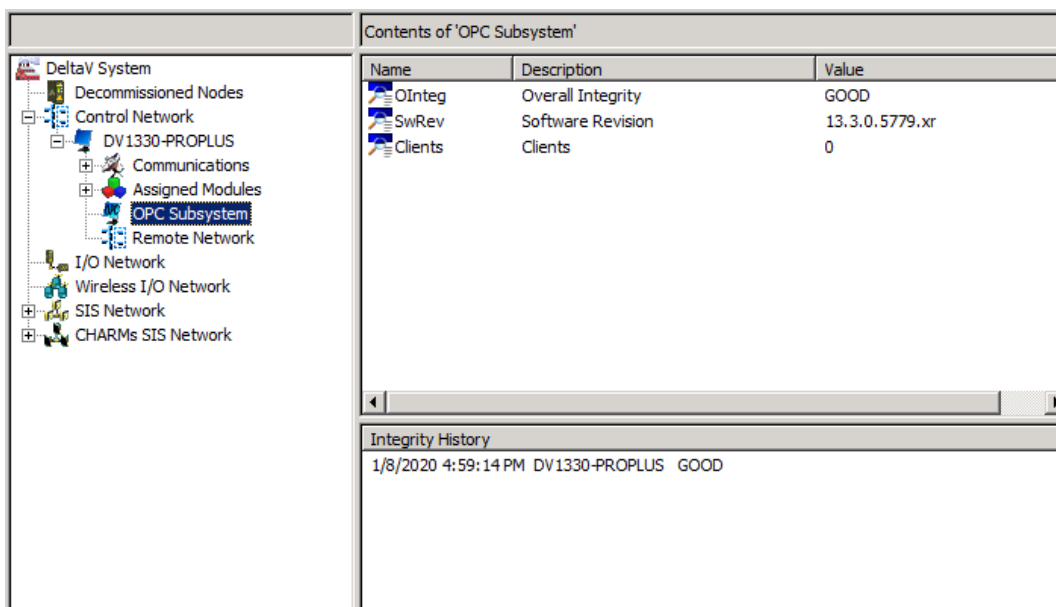
Once this is installed, when browsing for local OPC servers, the DeltaV OPC Server will appear.

Prerequisites

Verify the OPC Server

To verify the OPC Server, on the machine where the DeltaV OPC Server is running, open **DeltaV Explorer**.

From the **Applications** menu, open **Diagnostics**.



On the left side expand **DeltaV System**, **Control Network** and then the name of the DeltaV node. Select **OPC Subsystem**.

On the right, ensure that **OInteg** (Overall Integrity) is set to *Good*.

Verify Data Retrieval

To verify data retrieval use DeltaV’s OPCWatchIt application. To run, from a Windows command line, enter `opcwatchit.exe`

- Verify **Server** is set to *OPC.DeltaV.1*. If it is not, click **Change Server** to select it.
- Click **BrowsePath**, select a tag and click **OK**.
- Click **Read** to display real time value of the selected tag.

If the OPC subsystem is not good or OPCWatchIt does not respond as described contact Emerson Automation Solutions technical support to troubleshoot and correct these issues.

Process Values

XLReporter can take snapshots of the process values and add them to an existing report worksheet, periodically or on event. To prevent excessive build-up of information in a single worksheet, new workbooks and worksheets can be created automatically.

Process values can be retrieved from DeltaV by **XLReporter** via the DeltaV OPC Server.

If **XLReporter** is installed on a non-DeltaV node, the DeltaV OPC Remote application needs to be installed on the machine. This can be found on the DeltaV installation CD in the **DV_Extras** folder.

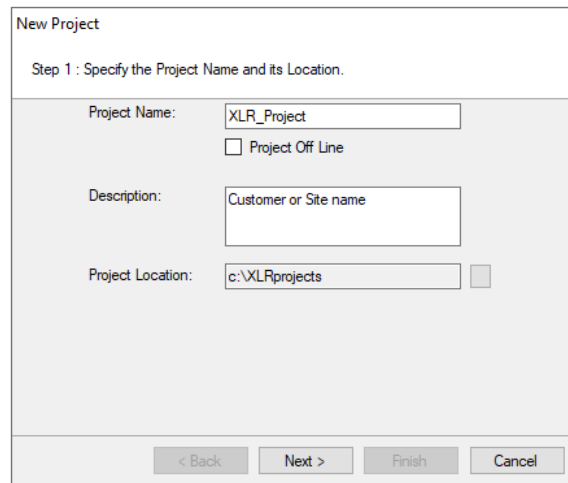
Once installed, the DeltaV OPC server appears as a local OPC server.

Create a Project

From the **XLReporter Project Explorer** select **File, New** to start the **Project Wizard**. This will give step-by-step instructions on creating a project

Step 1

- Enter a **Project Name** and **Description** (optional).



New Project

Step 1 : Specify the Project Name and its Location.

Project Name: XLR_Project

Project Off Line

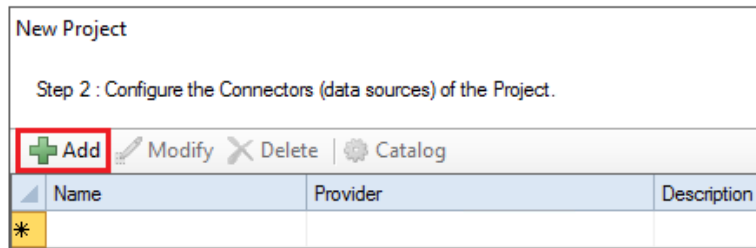
Description: Customer or Site name

Project Location: c:\XLRprojects

< Back Next > Finish Cancel

Step 2

- Configure the data connector, click **Add**



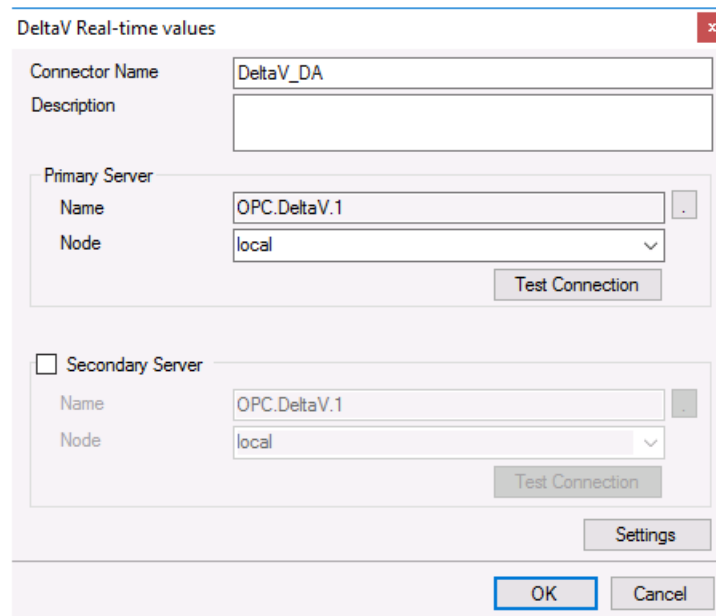
New Project

Step 2 : Configure the Connectors (data sources) of the Project.

Add Modify Delete Catalog

Name	Provider	Description
*		

Select **Emerson Automation Solutions, DeltaV Real-time values**.



DeltaV Real-time values

Connector Name: DeltaV_DA

Description:

Primary Server

Name: OPC.DeltaV.1

Node: local

Test Connection

Secondary Server

Name: OPC.DeltaV.1

Node: local

Test Connection

Settings

OK Cancel

The **Primary Server** default settings should be all that is required. Click **Test Connection** to verify.

Verify Data Communication

To verify communication to the DeltaV OPC Server, open the **Project Explorer** and select the **Tools** tab. Launch the **System Check** application.

- Click **Add**
- Choose the *DeltaV Connector* from the dropdown list,
- Click the pushbutton ([...]) next to Items to open the Tag Browser window.
- Select one or more tags, click **OK**

To verify the connection and see the current values click **Start**.