

System Check

Overview

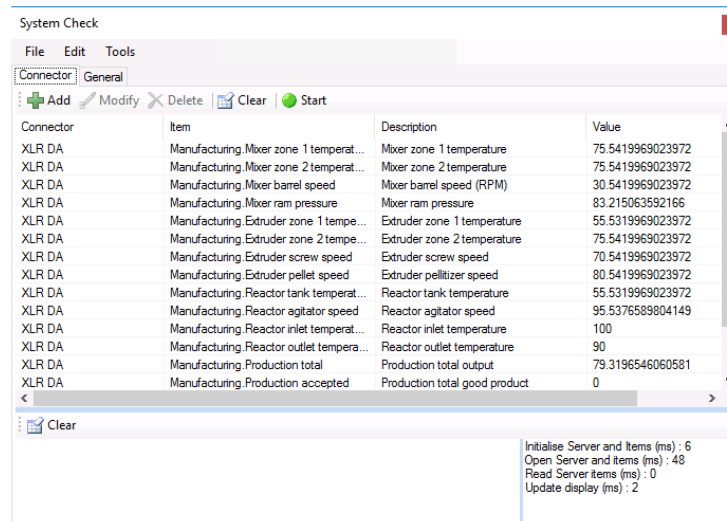
The **System Check** is provided to perform diagnostics on the installation, verify data connectivity and retrieval from real-time data sources and to help repair any defects found in the system.

The **File, Save** option is provided to save any item added under the **Connector** tab so it can be reloaded if needed.

When **System Check** is closed, if *default.sck* does not exist in the project it is created and saved with any item selected in the **Connector** tab. The next time **System Check** is opened, *default.sck* is loaded.

Connector

The **Connector** tab is used to verify reading/writing to real time data connectors.



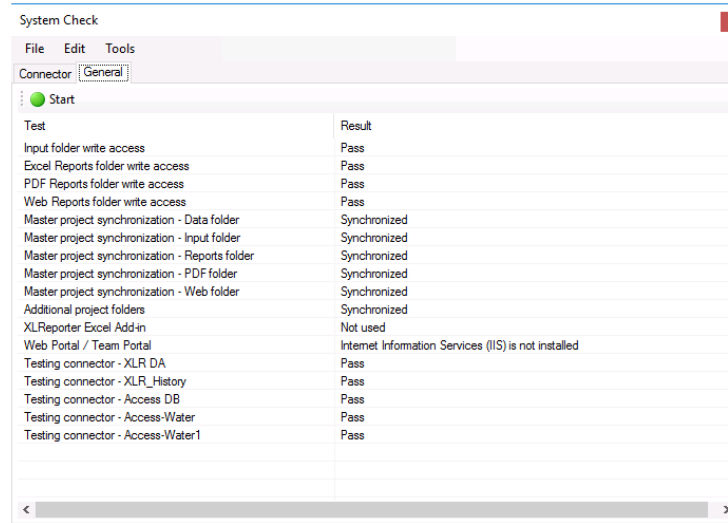
Select **Add**, choose a real-time **Connector** and some **Items** provided by the connector.

Click **Start** to have the values update at the rate specified in **Edit, Update Rate**. If the item support writes, click **Modify** and set a new value for the items. To clear the list, click **Clear**.

The lower part of the display shows any errors that occurred when the items are read. In the lower right are the scan times of various operations, **Open Server items (ms)** indicates the speed to establish communications and **Read Server items (ms)** indicates the speed at which the items are read.

General

The **General** tab is used for general tests. Click the **Start** pushbutton to have the installation scan and repair defects. When complete, the display will show the results of the scan. As part of the scan every connector configured in the project is verified.



The results of the scan are saved to *SystemCheck.txt* in the **Log** folder of the project. This makes it easier to troubleshoot the system as this file can be provided to a technical support specialist for analysis.

Tools

Install Design Studio

This option is enabled when Microsoft Excel is installed on the system and the **Template Design** setting for the project is set to *Use XLReporter Addin in Excel* but the **XLReporter** ribbon has not been installed into Excel. When selected it attempts to install the **XLReporter** ribbon into Excel for use in designing reports.

Repair Design Studio

This option is enabled when Microsoft Excel is installed on the system, the **Template Design** setting for the project is set to *Use XLReporter Addin in Excel* and the ribbon has been installed. When selected it attempts to repair any issues between the ribbon and Excel itself.

Set up Web Portal

If the **Distributed Edition** of XLReporter is installed but the web portal configuration needs to be changed, this option can be used to open the same set up configured during installation.

Distributed Edition

IP Address: 192.168.8.128

Application: XLRweb

Physical Path: C:\XLReporter

Website: Default Web Site

Advanced

Web Portal URL: 192.168.8.128/XLRweb

Identity

Built-in account

ApplicationPoolIdentity

Custom account

Account: SYTECH\Admin

Password:

Confirm:

Setup Cancel

Note, Windows Administrator privileges are required to access this application.

For information on the settings provided, see the **Setup the Web Portal** document under the REPORT section of the **Document Library**.

Information in this document is subject to change without notice. SyTech assumes no responsibility for any errors or omissions that may be in this document. No part of this document may be reproduced or transmitted in any form or by any means, electronic or mechanical, for any purpose, without the prior written permission of SyTech.

Copyright 2000 - 2023, SyTech. All rights reserved.

XLReporter® is a registered trademark of SyTech (dba of TheReportCompany, LLC).

Microsoft® and Microsoft Excel® are registered trademarks of Microsoft, Inc.
All registered names are the property of their respective owners.